

LESSONS FROM THE LIFE OF MOSES

The Reverend Bob Martin, Lead Pastor
The Reverend Pam Dubov, Executive Pastor



Address: 1199 Highland Avenue in Largo, 33770
Druid Campus: 2039 Druid Rd in Clearwater, 33764
Phone: (727) 584-8165 | **Prayer:** (727) 559-PRAY
Office Hours: 9 a.m.—4 p.m., Monday-Thursday
E-mail: church@stpaulumc.org | www.stpaulumc.org

WORSHIP AT 9 AM

Prelude	Kathy Tuminello, Accompanist	
Introit	<i>America the Beautiful</i>	Dr. Don Morgan
Welcome	Pastor Pam Dubov	
*Hymns	<i>Lean On, O King Eternal</i>	No. 580
	<i>Savior Again to Thy Dear Name</i>	No. 663
*Apostles' Creed	No. 156	
Prayer with Lord's Prayer	No. 895	
Offering	<i>America</i>	Dr. Don Morgan
*Doxology	<i>Praise God From Whom</i>	No. 94
Prayer of Thanksgiving		
Hymn	<i>Glorious Things of Thee Are Spoken</i>	No. 731
Message	"What's in Your Heart?"	
	Pastor Bob Martin	
	Exodus 3 (selectively)	
*Hymn	<i>Because He Lives</i>	No. 364
*Benediction		
Reprise		

9 AM Worship Leader: Dr. Robert Williams
11 AM Worship Leader: Alison Van Duyne

HOW TO STREAM ONLINE

We stream both worships at 9 and 11 AM. There are currently three ways to stream:

- 1) **Visit our website** stpaulumc.org and click on the link on the front page. You can also click on Live Worship in our free app or [click here](#) to visit the streaming site directly. When the streaming site opens, click on the play triangle to start streaming.
- 2) **If you have Facebook** follow us to get a notification when we start streaming. You can also visit our Facebook Live page: facebook.com/StPaulUMCLargo/live
- 3) **Stream on Youtube:** youtube.com/stpaulumclargo1

HOW TO GIVE ONLINE

Visit our website stpaulumc.org and click the **"Give" link** at the top of the page. You can also click on Give in our free St. Paul app (search St. Paul United Methodist in your app store). Make a one time gift or set up a recurring gift. You can use credit card or ACH to donate.

11 AM SET LIST

WE PRAISE YOU

by Brandon Lake, Brian Johnson, Matt Redman, and Phil Wickham

BATTLE BELONGS

by Brian Johnson and Phil Wickham

O PRAISE THE NAME

by Benjamin Hastings, Dean Ussher, and Marty Sampson

MY HEART IS YOURS

by Brett Younker and Daniel Carson

REV. BURTON MEMORIAL

There will be a celebration of life service remembering the Rev. Jeanette Burton this Wednesdays Nov. 11 at 11 AM in the Christian Life Enrichment Center. We will be observing social distancing guidelines and seating so if you plan to attend the service, please use the link to register in advance. You can also call the church office Mon-Thurs from 9 AM to 4 PM at 727-584-8165 if you are unable to use the online form.

RESERVE YOUR SEAT

OFFICE HOURS

Our church staff is still working Mon-Thurs from 9 AM to 5 PM, but our public office hours are now 9 AM to 4 PM. If you're dropping by the office or calling in, please be aware that there is not a receptionist available after 4 PM.

CONNECT

FACEBOOK GROUPS

FB Group - StPaulUMC

FB group - StPaulParentsLounge

FACEBOOK LIVE

Wednesdays at 1 PM

Join Pastor Bob on our St. Paul Facebook (StPaulUMCLargo) for news, inspiration from scripture and more on Wednesdays at 1 PM.

KIDS & STUDENTS

Connect with Children and Student Ministries online and in person. Check page 4 for more information.

HANDICAPABLE

Join our Handicapable Ministry for adults with special needs [on YouTube](#) each Wednesday at 6:30 PM for a new worship video.

CHOIR CHAT

Check-in with the choir on zoom Thursdays at 7 PM. To join in, email church@stpaulumc.org for a link to the zoom.

Need help connecting?

Email church@stpaulumc.org



StPaulUMCLargo
StPaulChildrensMinistry
SPUMCLighthouse
SonKissedPreschool



StPaulUMCLargoFL
treehousekids412
stpaul_lighthouse
sonkissedpreschool

PRAYER LIST

Audie W.
Carl S.
Chris M.
Chuck D.
Corey T.
David B.
Debbie & John
Dee & Family
Don & Lorraine
Don N.
Dorian
Duane W.
Gloria T. & Family
Jay
Jennifer
Jerry
Jojo R.
Judi & Family
Kathy H.
Kim M.
Kristina & Jeremiah
Kristina W.
LaNan
Melissa S.
Micheline L.
Phyllis S.
Rev. Hays M.
Ron

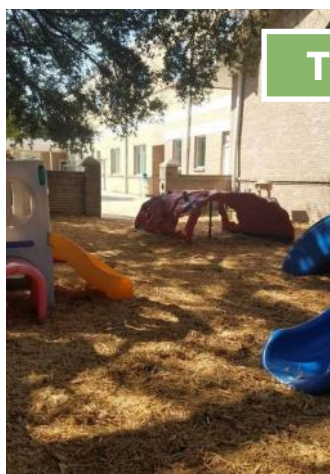
Shirley & Harold R.
Stephen B.
Stephen H.
Tammy B.
Tom M.
Wanda
Yvette C.

MILITARY PRAYER LIST

Aaron
Austin & Max
Carl H.
Dominic N.
Eric P.
John Moss IV
Lawson
Nancy B.
Peter
Stephen B.
Zach L.

Deaths

Please pray for the family and friends of **Virginia (Ginny) Jeffrey** who recently passed on to life eternal.



THANK YOU, SCOUTS!

Cub Scout Pack 468, Paul Werder and the Cole family refreshed the mulch on the playground a few weeks ago. Thank you for making the playground look great!

SON KISSED PRESCHOOL

Mrs. Rachael's class did some spooky handprint art for Halloween!





THANKSGIVING FOR PINELLAS

During this year's Thanksgiving for Pinellas, pre-registered families will do a drive through pick up on Nov. 23, and our volunteers will fill their trunks with a turkey and all the fixings for a delicious Thanksgiving dinner. Our United Methodist Women are providing some of the food items needed, so we have a revised list of what we need donated to Thanksgiving FOR Pinellas. We still need:

- **Stuffing mix (instant preferred)**
- **Instant mashed potatoes**
- **Cranberry sauce**
- **Canned yams**
- **Turkey gravy (in a jar)**

You can drop off donations at the Druid campus (2039 Druid Rd) Mon-Weds from 1-3 PM or at the church office Mon-Thurs from 9 AM to 4 PM. **Thanks for helping us share holiday joy with 250 local families during this tough time!**

BOY SCOUTS FUNDRAISER

Luminary sets of 12 are still available from our boy scout troop 468 for \$8. There is no table this year, so if you're interested in ordering luminaries please contact Diane Cole at Dianecole97@gmail.com or call/text 727-422-0018. If you don't need decorations but you'd like to support our scouts, donations are also gratefully accepted. Troop 468 thanks you for your support!

ONLINE SUNDAY STUDY GROUPS

Some of our Sunday study groups are currently meeting on Zoom. If you would like to be part of one of these studies, send us an email at church@stpaulumc.org so we can share the zoom information with you.

9:15 AM: HOMEWARD BOUND
10:30 AM: FRIENDSHIP CLASS
7 PM: TNT (Twenties and Thirties)



MAKING A 2021 COMMITMENT

Your faithful prayers and generous contributions have allowed your church to continue to offer the love, grace and peace of Jesus Christ to a world currently finding itself in fearful and uncertain times. [Click here](#) to view some of the many ways you have helped impact our local community and beyond, in the name of Jesus. As we look toward 2021, please pray over your contribution in the coming year and how you will partner with God in the work he is doing at St. Paul. You may complete the giving card you receive in the mail and return it to the church office, or you can go to our website or St. Paul app right now and [make your pledge online](#). We know that many have been impacted financially this year, and whether you are able to give in abundance or sacrificially, our prayer is that we all pledge something so we have 100% participation. You have an important role in our church, and we are so grateful for you!

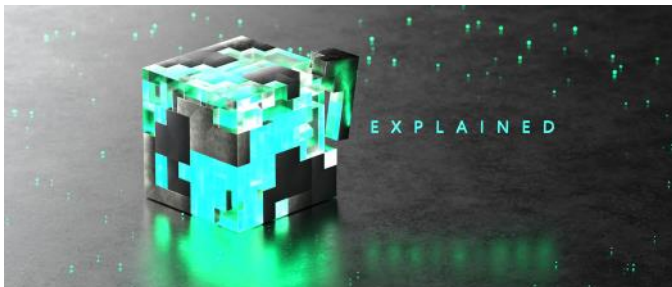
ONLINE COMMITMENT CARD

STUDENT MINISTRY

Student Ministry meets in the Christian Life Enrichment Center on Sundays from 6-7:30 PM. That includes games, worship through music, teaching and small groups. We will not be serving dinner at this time. Students will wear masks when in the building, observe social distancing and follow the safety guidelines our adults are following on Sundays. [Click here](#) to see a video of last week's Fall Fest fun.

You can also still connect with us online even when we are meeting in the building! On Sundays at 8 PM check out our virtual weekly message on our social media accounts.

You can also engage and connect with our Student Ministry each Wednesday night at 6 PM through zoom. We'll talk and listen to each other, and then have the chance to go deeper as we reflect on the Word for the week (Sunday's message). Contact Alison Van Duyne at alison.v@stpaulumc.org for zoom info.



OUR CURRENT SERIES: EXPLAINED

Complicated. Long. Conflicting. Outdated. Contradictory. When it comes to the Bible, you've probably heard all that and more. Maybe nothing brings up more of questions of faith than the Bible. What is it? How does it work? And why does everybody say it's helpful when it doesn't always feel that way? In this series we'll take a closer look at the Bible, why we trust the documents in it and how we use them. In other words, we're talking about the Bible...explained.



CHILDREN'S MINISTRY

Kids from infant through 5th grade are invited to join us at 9 and 11 AM in the CLEC for Children's Ministry. You can also join us online on zoom at 9:30 and 11:30.

SAFETY GUIDELINES

- Kids attending in person worship need to pre-register through our RSVP system. You Each week's RSVP link is posted on our website and app the Sunday before. Choose the Child's RSVP option for type of registration.
- We recommend one parent to drop-off and pick-up your child(ren).
- During check-in, families should maintain 6-foot social distancing
- Kids kindergarten and up will be required to wear a face mask
- We will take the temperature of all kids entering the kids' space and require hand sanitizer or wipes before entering
- Increased sanitation in common areas, toys and child needs. All kids locations will be deep cleaned on a weekly basis
- Ministry volunteers and staff will wear masks at all times within the kids' area
- No food or drinks will be allowed in the kids area. Prepackaged snack will be provided
- No personal items in the classrooms
- Kids' classrooms, restrooms & touch points will be disinfected in between all services
- Toys will be rotated out between services
- Games and activities will be adapted to maintain CDC safety guidelines

RETURN TO CHURCH GUIDELINES

We're excited to be returning to worshipping together as a church family on Sunday, Sept. 13. The safety of our attendees, volunteers, and staff remains our highest priority, so when we do return we will implement new health and safety protocols and other changes shared below. We are all figuring this out together, so we ask for your patience and understanding as we strive to protect all the members of our worship community.



LOCATION

We are worshipping in the Christian Life Enrichment Center (CLEC) where spaced seating, and a larger lobby and restrooms will make it easier for us to social distance.



WORSHIP TIMES

Our 10:30 AM band led worship time has moved to 11 AM to allow more time to sanitize between services. **Our traditional service will remain at 9 AM.**

The new safety measures that we're implementing will mean it takes a bit longer to enter the building and be seated, so when possible, please arrive early for the first service.



PARKING

Our Highland entrance is the drive thru drop-off location for those who have difficulty with mobility. If you're able to walk easily, we ask that you love your neighbor by parking in the spaces furthest from the CLEC to allow our friends who have trouble walking to park closest to the building. The parking lot by the office entrance is for those with limited mobility.



RESERVATIONS

We have a limited number of seats available, so for a time, we will use a reservation system. Making a reservation in advance will ensure that we have a seat for you in worship. See page 7 for more info. We will still be able to welcome guests with seats set aside for visitors.

WELLNESS



Anyone who is sick, coughing, has a sore throat, or a fever is asked to remain home. We're committed to continuing to provide worship online, so anyone who needs to remain at home whether due to illness, being in a vulnerable group, or other reasons can still join us in worship.

As we enter the building we are using no-touch thermometers to take everyone's temperatures. Anyone with a fever of more than 100.4 needs to return home where you can worship with us online.

Everyone needs to wear a mask in the building. If you don't have a mask, we'll provide one to you. If you're unable to wear a mask, you can continue to worship with us from home until masks are no longer needed.

Everyone who enters the building will be provided with hand sanitizer and must sanitize their hands unless a health condition prevents it.





WORSHIP

Our services are designed to be as touchless as possible by eliminating paper bulletins and hymnals, and using offering collection boxes before or after worship instead of passing the plate.

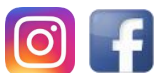
Several studies have shown that singing creates a higher risk for the spread of the virus, but singing and music are an important part of how we worship God together. So that we can continue to connect to the Holy Spirit through music, our worship leaders will sing while the rest of us will express our love of God by humming, clapping, dancing, raising our hands, etc. instead of singing.



CHILDREN

Children's Ministry and nursery will be available at a later date. Children are welcome to worship together with their families and are encouraged to bring electronic devices with headphones to use during worship. They will find lots of videos and resources on our Children's Ministry social media accounts, including Storytime with Mrs. Kaitie and more.

INSTAGRAM:treehousekids412
FACEBOOK:StPaulChildrensMinistry



THANK YOU

We thank you all for working with us to take care of each other, even when it may be inconvenient. You may not be someone who is in a vulnerable group or concerned about catching the virus, but these measures will help us to protect those who are. They only work if all of us buy in and do our part to keep each other safe. Thank you for putting the safety of our St. Paul family members first!



SOCIAL DISTANCING

Individuals or families need to maintain social distancing in the fellowship hall and common areas. Wait to be seated by our ushers, who will place those who are living in the same household in seats together, and maintain 6 feet of distance between those who are not living together. No one is allowed to move chairs or seating except our ushers.

We are all looking forward to seeing each other again and will naturally want to give each other hugs or handshakes; but during this season we will greet each other with smiles and waves that maintain 6 feet of social distancing.

When leaving worship, wait to be directed by the ushers and use the specific exits they guide us to, so we can avoid creating bottlenecks and maintain social distancing.



 **ST·PAUL**
United Methodist Church
WWW.STPAULUMC.ORG

HOW TO RSVP FOR WORSHIP

Due to social distancing requirements, we have a limited number of seats available for worship. To ensure that we have a seat for you on Sunday, we ask that you RSVP online in advance. It's an easy process that only takes a minute. If you don't have the technology to register online, you can reserve your seat by calling 727-584-8165 during our office hours Mon-Thurs 9 AM to 5 PM. If you call after our office closes on Thursday, we will not receive your RSVP and you will not be on the list. If you have a computer, smart phone or other way to register online, we ask that you use the online system. It's faster for you and saves time for our staff as well. You can make online reservations right up until worship time, or until we run out of seats.

VISIT THE RSVP LINK ON OUR WEBSITE OR APP

CHOOSE WHICH WORSHIP SERVICE YOU WANT TO ATTEND

Each Sunday's RSVP page will open the Sunday before after worship ends. You'll have a week to reserve your seat, but don't wait too long. Seats are first come, first served!

AUG 16 Sun, 9:00 AM - 10:00 AM EDT
Sunday Worship at St. Paul UMC
St Paul United Methodist Church: Christian Life
Enrichment Center, Largo, FL

Tickets

AUG 16 Sun, 11:00 AM - 12:00 PM EDT
Sunday Worship at St. Paul UMC
St Paul United Methodist Church: Christian Life
Enrichment Center, Largo, FL

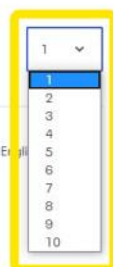
Tickets

ENTER THE NUMBER OF PEOPLE IN YOUR HOUSEHOLD WHO WILL ATTEND

Be sure to enter the total number of people you are reserving seats for, including yourself. Those who live in the same household will be able to sit next to each other. Those who live in different households will be seated 6 feet apart.

Save Your Seat(s)
Free
Sales end on Aug 16, 2020

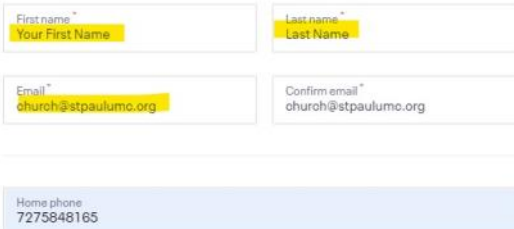
Powered by eventbrite



ENTER THE NAME YOU'LL USE TO CHECK IN

Our ushers will check in you and your other household members on Sunday using the name you enter into the form. If you have reserved 3 seats they will all be listed under this name. You will also receive an email confirmation at the email you enter in registration.

Contact Information



☐ Eventbrite can send me emails about the best events happening nearby.

Important notice re COVID-19: Please note any interaction with the general public poses an elevated risk of being exposed to COVID-19 and we cannot guarantee that you will not be exposed while in attendance at the event. The event organizer is solely

Register

HIT THE REGISTER BUTTON & YOU'RE DONE

You'll see a thank you page, and you'll also receive a confirmation email.

Note: If we reach capacity with RSVPs the Eventbrite registration page will automatically close registration, and you will see a message that we have filled all our seats.

WHAT HAPPENS ON SUNDAY?

On Sunday, you'll give your name to an usher. They'll check you in and seat you and your household. Seats will be assigned by the ushers so we can make the best use of our limited seating.

I RSVPED, BUT NOW I CAN'T ATTEND

If your plans change and you are no longer able to attend worship, please cancel your reservation to make your seat available for someone else. To cancel you can click the link near the bottom of the confirmation email that says "View or edit your order." You can also [email us](#) or call 727-584-8165 by Thursday at 5 PM to cancel.

WHAT IF I FORGET TO RSVP?

If there are extra seats and RSVPs have not filled the room, we will be happy to seat you on Sunday. However, if you do not RSVP, you're not guaranteed a seat. We strongly encourage you to RSVP in advance to ensure that we will have a seat for you.